



**COUNCIL FOR
THRIVING
CHILDREN**

**INAUGURAL MEETING OF THE
GOVERNOR'S EARLY CHILDHOOD COUNCIL**

MAY 21, 2020

OPENING POLL QUESTION

How are you feeling this morning? (Choose all that apply)

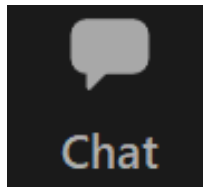
- Taking it slow this morning.
- I'm not even sure which Zoom I'm on...
- I've had my coffee and I'm ready to go!
- I'm getting things done - multitasking calls and emails!
- Ready to jump in and start strengthening the infrastructure for NHs children and families.
- Already thinking about news ways to expand access to early childhood and family supports!
- I can't wait to learn more!



WELCOME & INTRODUCTIONS

INTRODUCTIONS

- In the zoom group chat, provide:
 - Your name, title, and organization
 - One thing you want for/wish for children in NH?





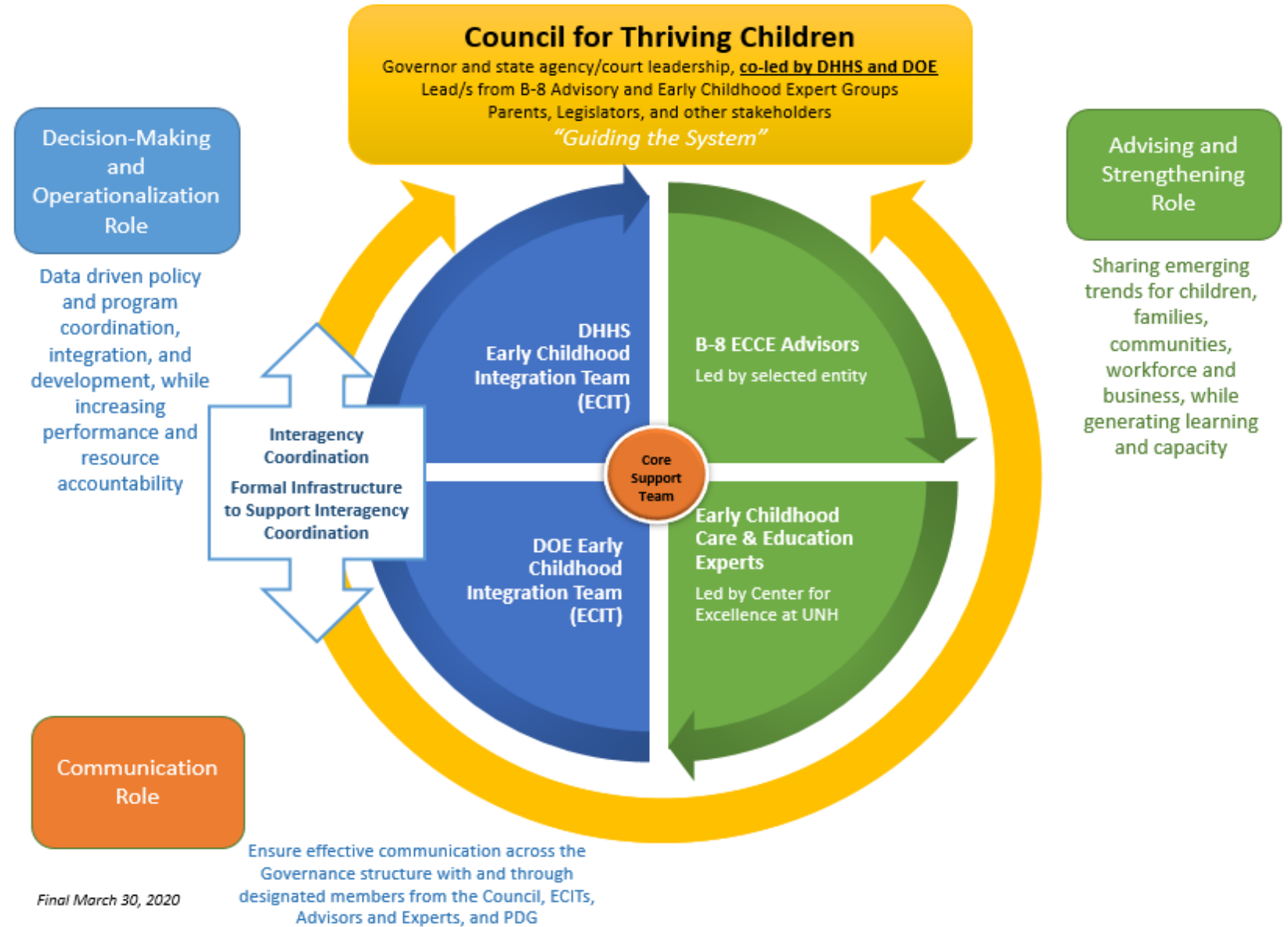
COUNCIL OVERVIEW & CHARGE

CHRIS TAPPAN
DEPARTMENT OF HEALTH AND HUMAN SERVICES

CHRISTINE BRENNAN
DEPARTMENT OF EDUCATION

On January 23, 2020, Governor Sununu signed [Executive Order 2020-03](#), establishing the **Council for Thriving Children** as New Hampshire's Early Childhood Council.

The Council is co-led by the Departments of Health and Human Services and Education. An objective of the Council is to strengthen NH's early childhood infrastructure.



EXECUTIVE ORDER 2020-03

- Strengthen New Hampshire's early childhood infrastructure in all environments, including, home, childcare, schools and community settings.
- Build the capacity of families, professional and non-professional caregivers and educators throughout the state to meet the important health and educational needs of our children.
- Ensure an integrated and coordinated early childhood governance structure across state government and connected to local communities by ensuring ongoing needs assessment and strategic planning.
- Enhance the interoperability of data systems within and across government agencies to inform and monitor program and service access, equity, and quality.

EXECUTIVE ORDER 2020-03

- **Promote parent knowledge and choice** through sustained family and community engagement, support, resources and feedback.
- **Ensure the sharing of best practice** by establishing and sustaining a Center for Excellence and local/regional forums that support parents, professional caregivers, educators, and community members
- **Expand access and equity, and improve transitions** for children and their families across the span of early childhood supports, services, and educational environments.

POLL QUESTION

After that overview of the Executive Order, can you see how you may contribute to the Council? (Please choose one)

- Not sure yet.
- I'm interested in learning more.
- It's becoming a little more clear.
- It's very clear to me how my work intersects with the Council.
- I have lots of questions.



SCAN OF THE ECCE SYSTEM

CHRIS TAPPAN
DEPARTMENT OF HEALTH AND HUMAN SERVICES

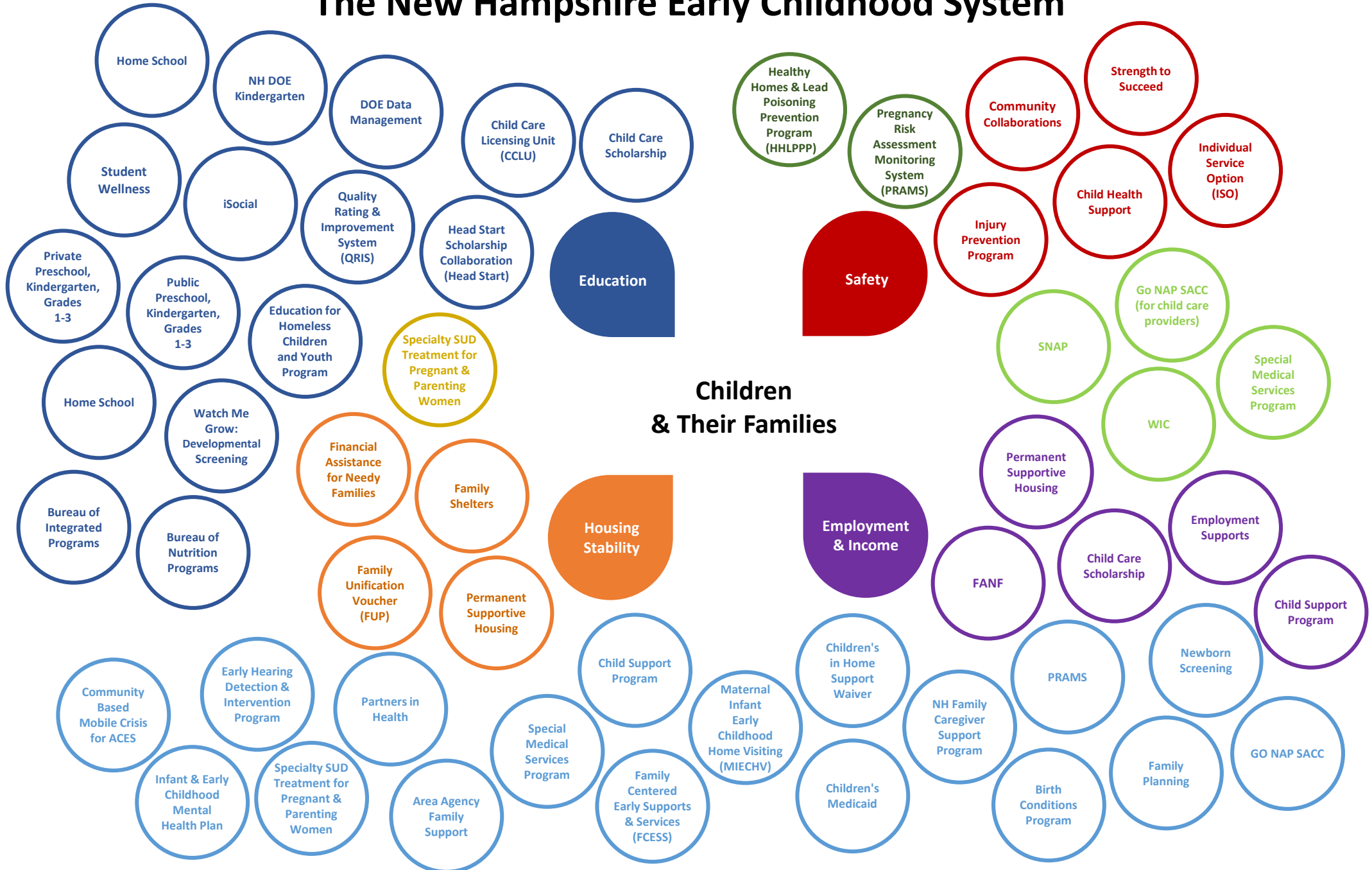
CHRISTINE BRENNAN
DEPARTMENT OF EDUCATION

NH'S MIXED-DELIVERY ECCE SYSTEM

- Nonprofit, for profit and faith based Child Care Centers
- Head Start / Early Head Start
- Family Child Care Providers
- Afterschool Programs
- Day and Summer Camps
- Food & Nutrition Services
- Local pre-kindergarten
- Schools
- Family Resource Centers
- Early Intervention
- Preschool Special Education
- Health and mental health programs



The New Hampshire Early Childhood System





NH'S PRESCHOOL DEVELOPMENT GRANT

mypages.unh.edu/pdg

KIMBERLY NESBITT, PH.D.
UNIVERSITY OF NEW HAMPSHIRE

THE PRESCHOOL DEVELOPMENT GRANT

- The grant seeks to support NH's vision that *all families are afforded comprehensive and responsive supports, so they are healthy, learning, and thriving now and in the future.*
- Three-year (2020-2022), \$26.8 million grant, to build New Hampshire's early childhood care and education (ECCE) system, a system that is
 - Effective
 - Inclusive
 - Responsive
 - Efficient
 - Evidence-informed



ACTIVITY 1

NEEDS ASSESSMENT

- Annual update of New Hampshire's Needs Assessment to **identify changing community and family needs**.
- Comprehensive examination of child and family access to services, the quality of those services, and the level of coordination in the ECCE system, with a **focus on possible disparities**.



ACTIVITY 2 STRATEGIC PLAN

- Annual update of state **strategic plan** to reflect **changing community and family needs** based on needs assessment.
- Support the **capacity of local communities** to develop local strategic plans to drive continuous quality improvement and sustainability.



ACTIVITY 3

FAMILY KNOWLEDGE, CHOICE & ENGAGEMENT

- Launch Welcome Families Website
- Build Family Resource Centers' Capacity
- Support transition to Watch Me Grow Developmental Screening
- Align Family-Focused Education initiatives
- Assist with NH's Whole Families Approach to Jobs Initiative



ACTIVITY 4 SHARING BEST PRACTICES

- Strengthen ECCE professional development
- Plan for a Early Childhood Center for Excellence at UNH
- Support revision and implementation of Quality Recognition and Improvement System
- Expand and evaluate coaching for play-based learning
- Identify strategies to use a mixed-delivery model to expand ECCE access



ACTIVITY 5

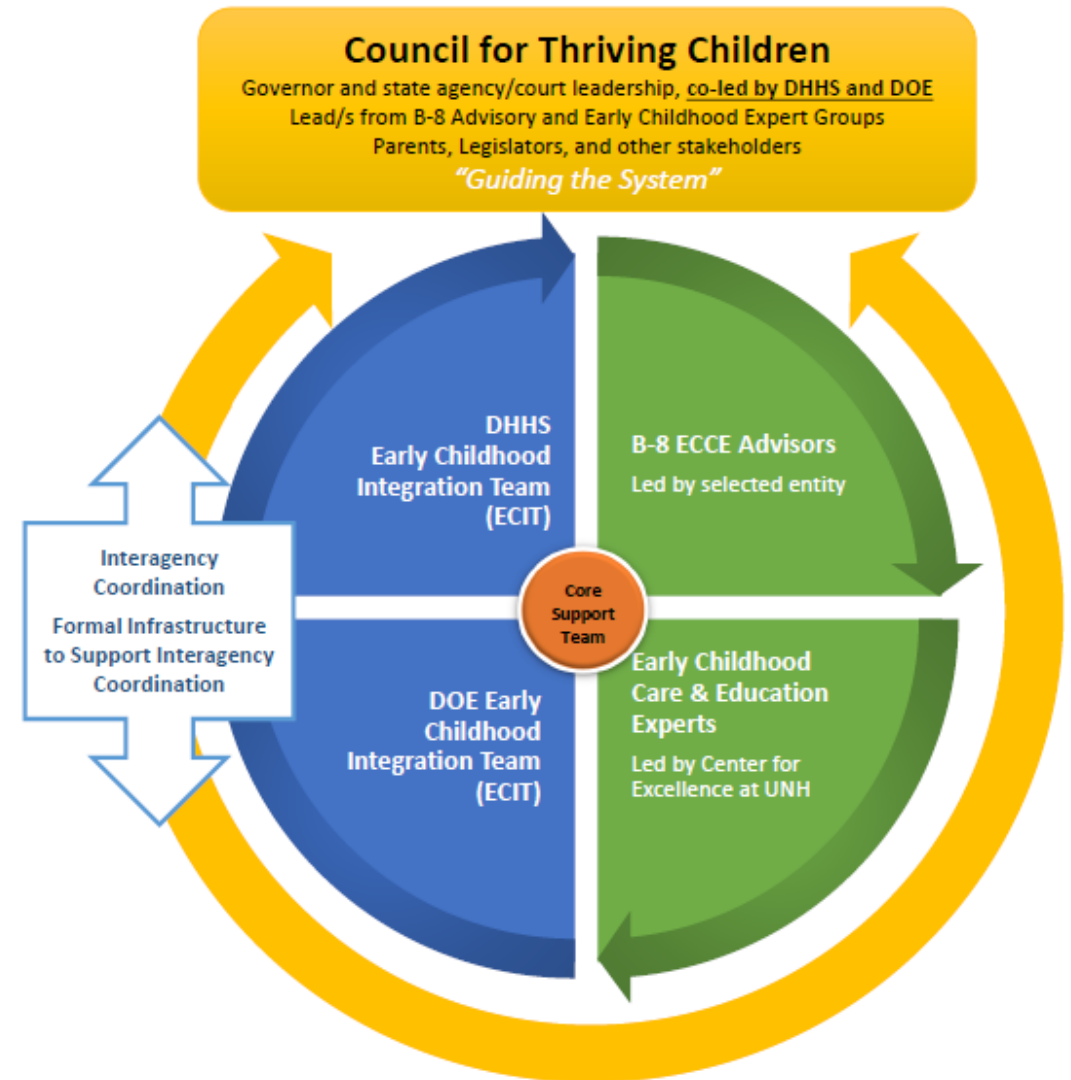
INCREASE ECCE ACCESS AND QUALITY

- Provide **communities access to critical funds** needed to address local needs, informed by and aligned with statewide efforts.



ACTIVITY 6 INTERAGENCY COORDINATION

- Fund **data interoperability** to enhance integrated reporting and align metrics to guide continuous quality improvement
- Support NH's **new childhood governance model**, including the Council for Thriving Children and ECCE Experts Advisory Team



UNH PDG STAFF



MEREDITH O'SHEA

Project Director



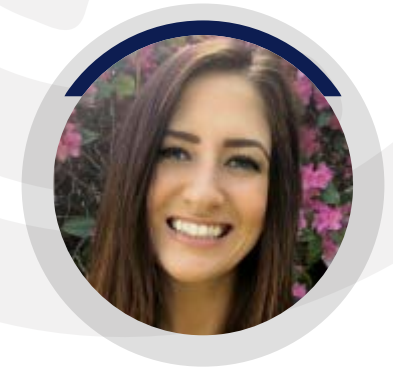
KAREN DUBOIS-GAROFALO

Lead Instructional Coach



JEN BERUBE

Instructional Coach



SARAH BOND

Instructional Coach



DHHS PDG STAFF



ELLYN SCHREIBER

DHHS Coordinator



BRITTANY LITTLE

DHHS Early Childhood
Integration Specialist



SARAH HENRY

BCDHSC Coordinator



EMMA HEATH

BCDHSC Administrative
Assistant



DOE PDG STAFF



VICTORIA SULLIVAN

DOE Administrative Consultant



SEAN THOMAS

DOE Grants Manager



PATRICE FREDETTE

DOE Project Manager



JOINT DHHS/DOE STAFF



TBN

Council for Thriving Children
Director



TBN

Business System Analyst



EMERGENCY CHILD CARE COLLABORATIVE

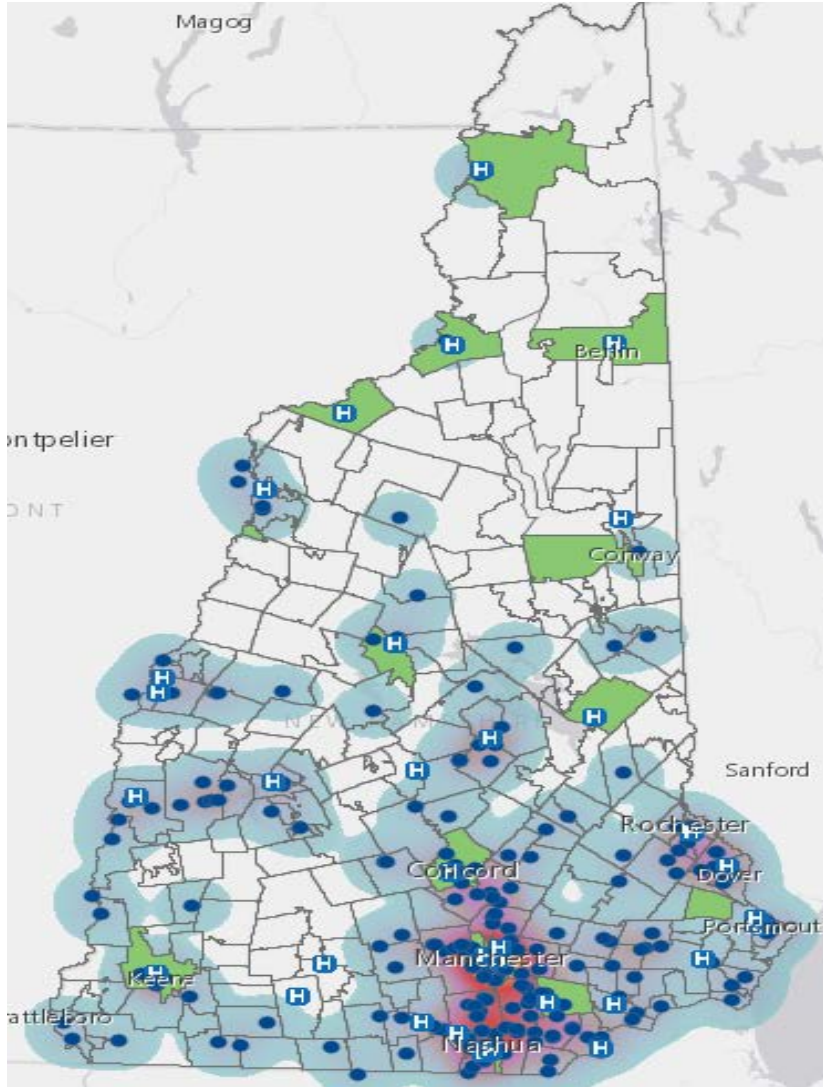
CHRISTINA LACHANCE
NEW HAMPSHIRE CHARITABLE FOUNDATION

CHRIS SANTANIELLO
DEPARTMENT OF HEALTH & HUMAN SERVICES



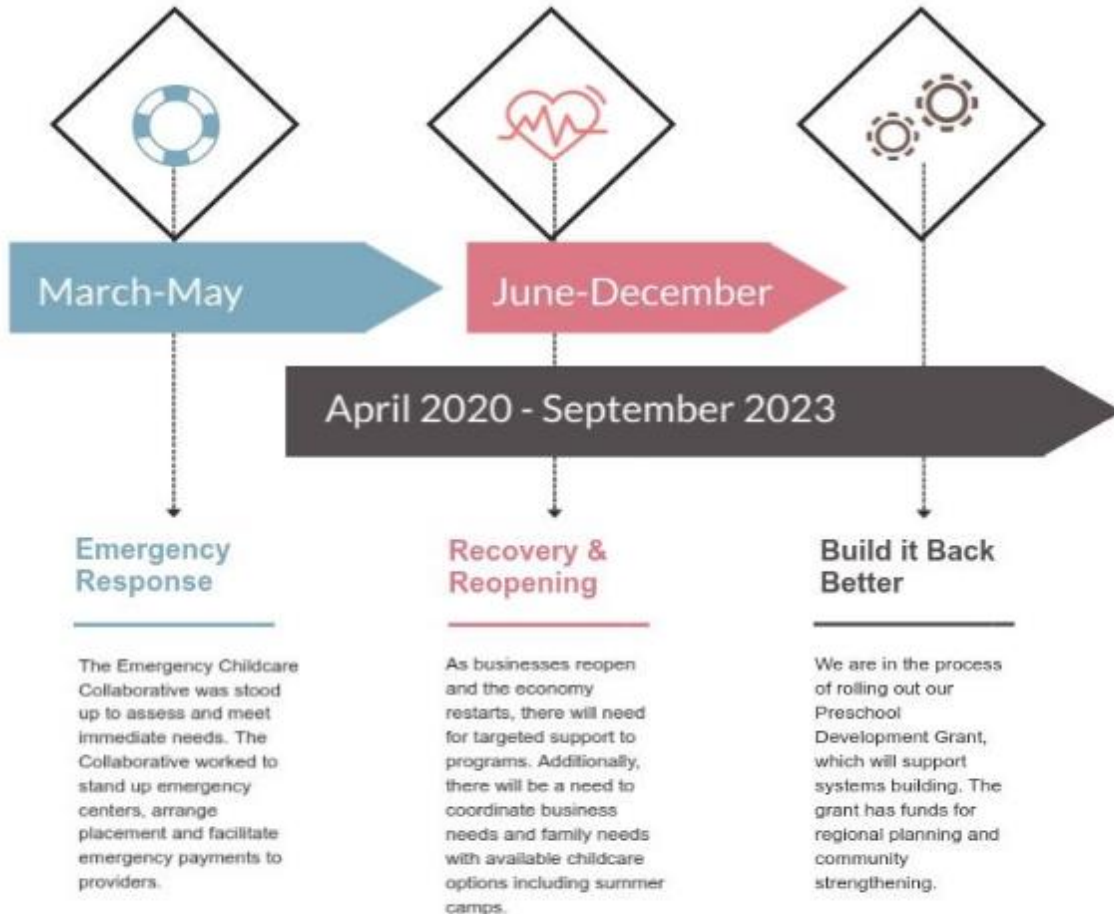
EMERGENCY CHILD CARE PROGRAM

WEEK OF MAY 17, 2020



- 300 are open and caring for children
- 140 are listed as opening within the next 30 days
- 46 new designations were issued May 15 - this includes 8 summer camps (each serving around 40 children)
- Approximately 6,300 children were being served. These numbers change daily
- Approximately 1000 open child care spaces available at any given time
- 4 family child care homes open in COOS by the 2nd week in June

Build It Back - Better



- A healthy ECCE system is essential to NH's economic well-being.
- We have the structure and some resources to build on.
- We are creating an aligned, but unique approach to continuing to manage and reopen all child care (centers, day and overnight camps) and family resource settings.
- Rebooting the system must be done in tandem with the reopening of industries and schools.
- Funding will be directed to stabilizing the system, supporting health and safety guidelines and building the system back better.



NEXT STEPS

CHRIS TAPPAN
DEPARTMENT OF HEALTH AND HUMAN SERVICES

CHRISTINE BRENNAN
DEPARTMENT OF EDUCATION



POLL QUESTION

Together we want to ensure that families have the skills, basic resources, supports, and capacity to promote their young children's development and learning.

Choose the **top three outcomes** that you hope we can achieve together.



POLL QUESTION

- Families have the concrete supports they need to ensure their children are healthy, learning, and thriving.
- Families have access to high-quality medical and mental health providers.
- Families and children are safe from harm.
- Families have rapid access to the information they need.
- Families have the skills to advocate for themselves and their children.
- Grandparents and alternative caregivers are supported in their role in providing safe and nurturing environments.
- Policies support equitable access to learning settings and services.
- Learning opportunities and services are informed by data.
- Learning opportunities and services are informed by evidence-informed best practices.
- State agencies, families, and partners foster child development as the foundation for strong communities and a prosperous New Hampshire.
- Families guide and inform all the decisions we make.