



**COUNCIL FOR
THRIVING
CHILDREN**

GOVERNOR'S EARLY CHILDHOOD COUNCIL
JUNE 23, 2020



WELCOME AND AGENDA

AGENDA

Time	Topic
11:00 to 11:30	Welcome Boundary Spanning Leadership
11:30 to 12:15	Council for Thriving Children Governance Structure <ul style="list-style-type: none">• DHHS and DOE Early Childhood Integration Teams• NH's Strategic Plan for Early Childhood
12:15 to 12:45	Early Childhood Care and Education System Scan <ul style="list-style-type: none">• Whole Family Approach to Jobs: Parents Working, Children Thriving• Emergency Child Care Collaborative and Child Care Recovery & Stabilization Program
12:45 to 1:00	Closing and Next Steps



BOUNDARY SPANNING LEADERSHIP

CHRIS TAPPAN AND CHRISTINE BRENNAN

In New Hampshire, we aspire to....



*A family-centric,
seamlessly
coordinated early
childhood care and
education system
that supports all
families opportunity
to live well and
thrive!*

GETTING FROM SILOS TO "SYSTEM"

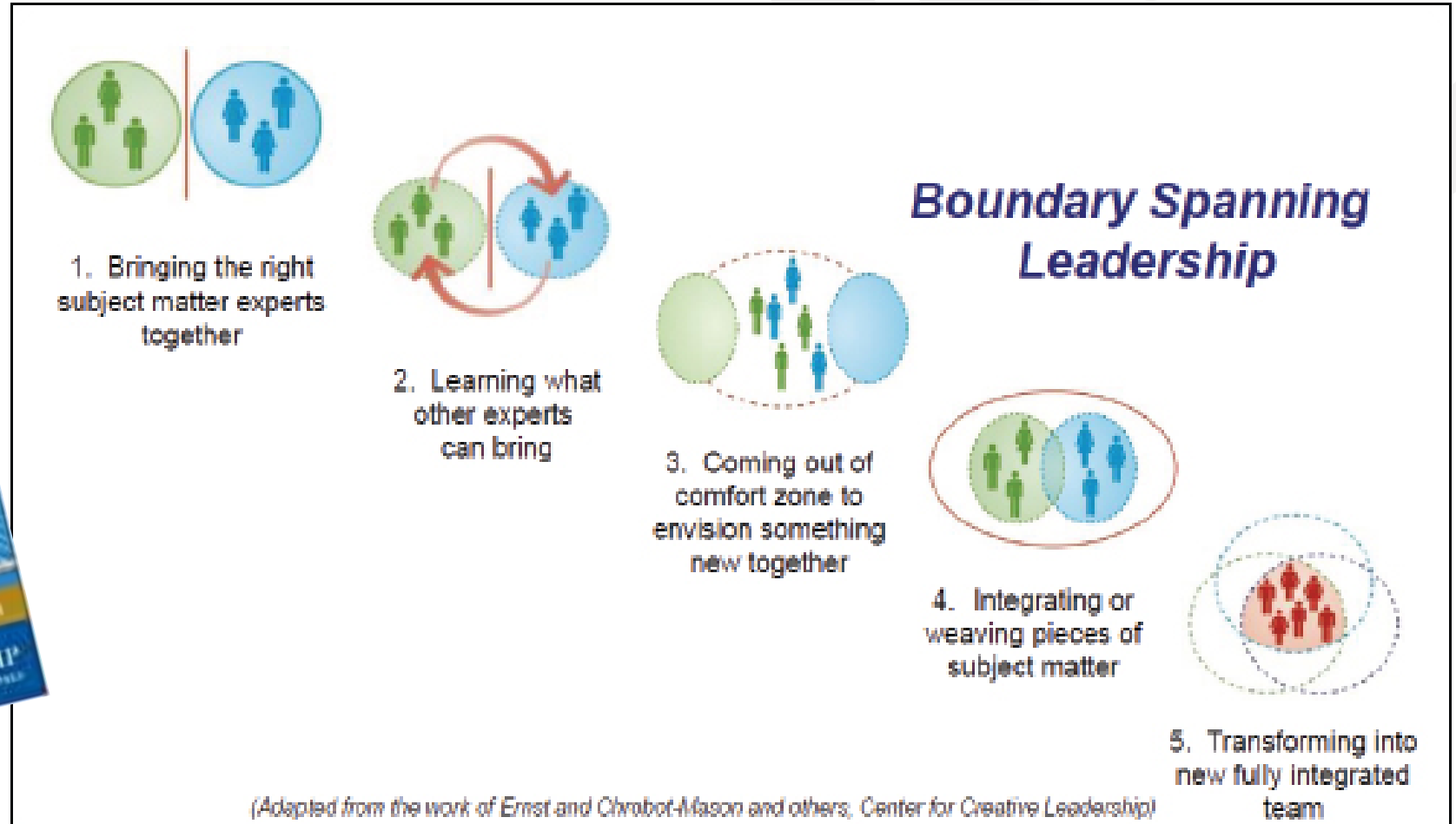
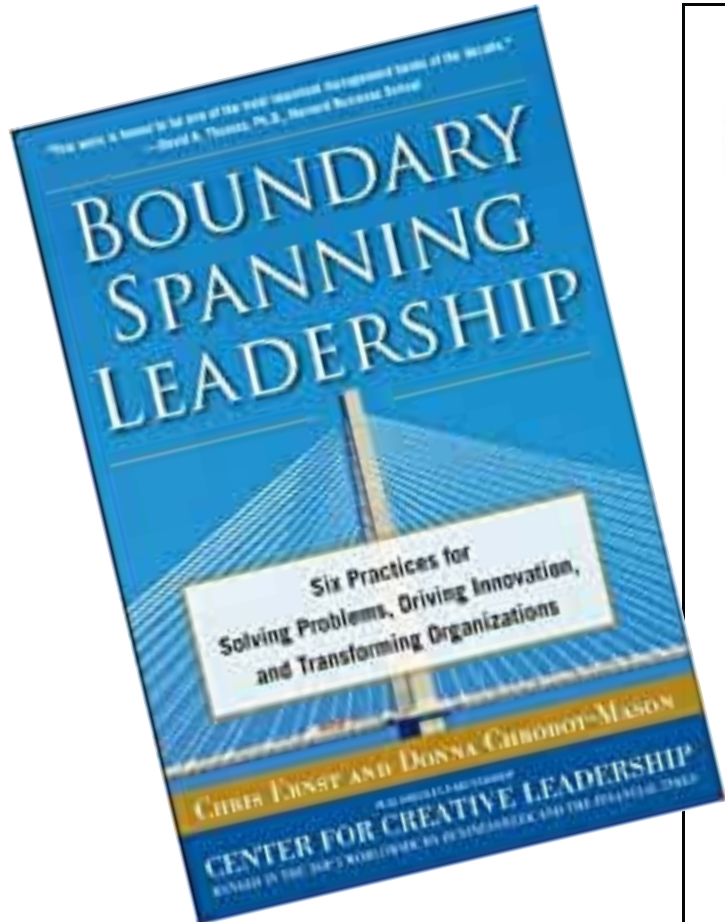


MOVING FROM VISION TO ACTION

3. That the Council shall advise, make recommendations and undertake the following:
 - a. Strengthen New Hampshire's early childhood infrastructure in all environments, including, home, childcare, schools and community settings.
 - b. Build the capacity of families, professional and non-professional caregivers and educators throughout the state to meet the important health and educational needs of our children
 - c. Ensure an integrated and coordinated early childhood governance structure across state government and connected to local communities by ensuring ongoing needs assessment and strategic planning
 - d. Enhance the interoperability of data systems within and across government agencies to inform and monitor program and service access, equity, and quality
 - e. Promote parent knowledge and choice through sustained family and community engagement, support, resources and feedback
 - f. Ensure the sharing of best practice by establishing and sustaining a Center for Excellence and local/regional forums that support parents, professional caregivers, educators, and community members
 - g. Expand access and equity, and improve transitions for children and their families across the span of early childhood supports, services, and educational environments.



HOW WILL WE GET THERE?



WHAT CAN YOU BRING TO THE TABLE?

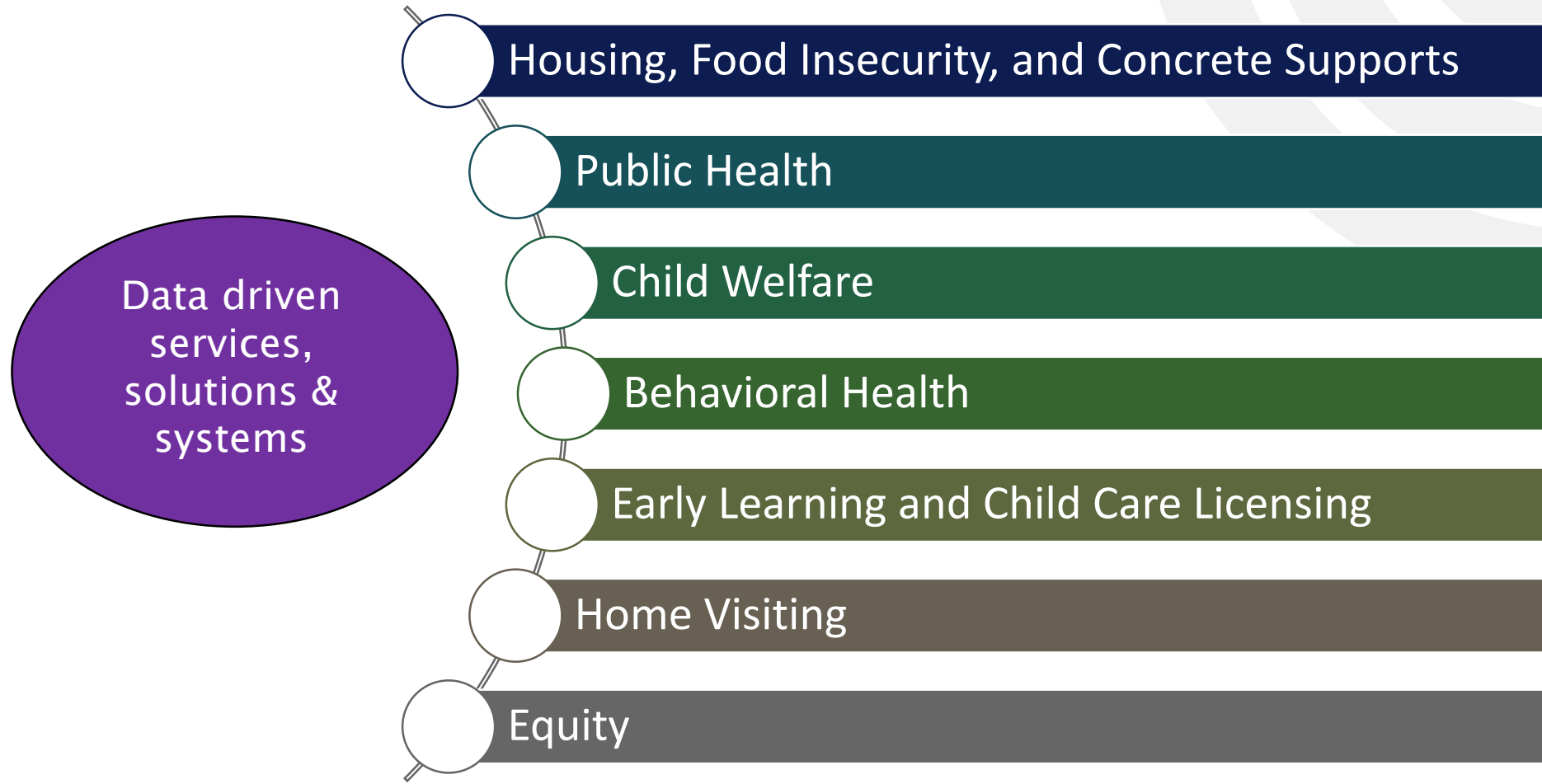




DHHS AND DOE
EARLY CHILDHOOD
INTEGRATION
TEAMS (ECITs)

TRICIA TILLEY AND BECKY FREDETTE

A VISION FOR UNPRECEDENTED COORDINATION



Early
Childhood
Systems
Governance



BUILDING BRIDGES TO AN EARLY CHILDHOOD INTEGRATION TEAM



AN EVOLVING AND CONSENSUS DRIVEN CHARTER

Purpose of the ECIT

Using Boundary Spanning Leadership principles of creating direction, alignment, and commitment, the Early Childhood Integration Team will serve as a governance structure to enhance service delivery for NH families and child serving programs by promoting collaboration, improving communication, and facilitating appreciative inquiry and problem solving. ***This ECIT will promote evaluation, innovation and action with the vision as the primary goal of the group.***

The ECIT will serve as a sustainable governance structure to promote a shared responsibility for programmatic oversight and accountability, resource management, data integration, and coordinated policies within DHHS.



Department of Health & Human Services
Early Childhood Integration Team

Charter

A circular inset image showing the silhouette of a person lifting a child into the air against a bright, glowing sun. The scene is captured in a warm, golden light, creating a sense of joy and care. The person's arms are extended upwards, supporting the child who is in mid-air. The sun is positioned behind the figures, creating a strong backlight effect and a lens flare.

NEW HAMPSHIRE'S STRATEGIC PLAN FOR EARLY CHILDHOOD

KIMBERLY NESBITT

INTRODUCTION TO THE STRATEGIC PLAN

- **Purpose:** A pragmatic, step-by-step approach that identifies goals, and lays out how progress toward those goals will be measured.
- Overseen by DHHS and DOE leadership with input from the Council for Thriving Children and the many community partners deeply vested in this critical work.



INTRODUCTION TO THE STRATEGIC PLAN

- Developed as part of NH's Preschool Development Planning Grant
 - Informed by comprehensive needs assessment
 - Annual update to reflect changing community and family needs
- **Stakeholder Engagement:** An integration of perspectives and resources among the state's health and human services organizations, the education system, the university system, families, and community partners.

GUIDING VISION AND PRINCIPLES

- All families are afforded comprehensive and responsive supports, so they are **healthy, learning, and thriving** now and in the future.
- Aspire for a **family-centric system** that is **inclusive, responsive, efficient, and evidence-informed**



EARLY CHILDHOOD STRATEGIC GOALS AND OBJECTIVES

GOAL 1: POSITIVE LEARNING EXPERIENCES

- *Effective learning opportunities are provided in all settings, including the home, child care, and after school programs, preschools, and elementary schools.*
- Objectives
 - 1.1. Support families as children's primary teachers
 - 1.2. Improve the overall quality of early childhood care and education supports and services
 - 1.3. Expand access to and availability of early childhood care and education for young children
 - 1.4. Create a stable and qualified early childhood learning and education workforce

EARLY CHILDHOOD STRATEGIC GOALS AND OBJECTIVES

GOAL 2: HEALTHY CHILDREN AND FAMILIES

- *Children and families throughout our state have access to the best opportunities for early and life-long health.*
- **Objectives**
 - 2.1. Improve access to and availability of universal (developmental, social-emotional, cognitive, academic, trauma) screening and services for children to promote optimal development
 - 2.2. Support access to affordable health care for families
 - 2.3. Support children's social and emotional development through easily accessible services and supports
 - 2.4. Increase the capacity of all families to advocate for themselves and their children

EARLY CHILDHOOD STRATEGIC GOALS AND OBJECTIVES

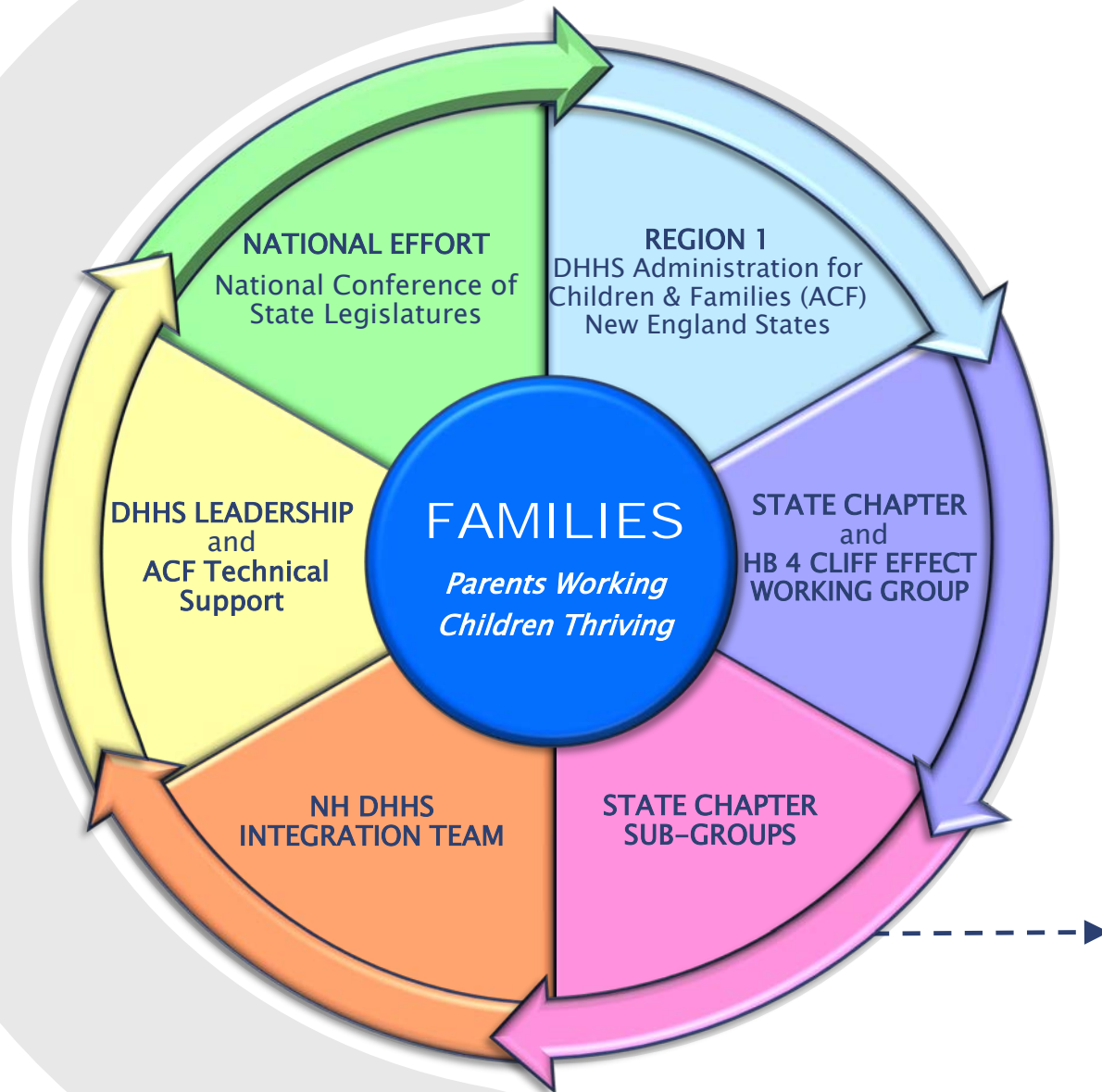
GOAL 3: STRONG FAMILIES

- *Families have the skills, basic resources, and supports to promote their children's development and learning before birth and continuing through age five and beyond.*
- **Objectives**
 - 3.1. Support families in accessing the basic economic resources to support their children
 - 3.2. Increase families' capacity to partner in the development, design, and delivery of the services they provide and receive
 - 3.3. Connect families and caregivers, starting prenatally, with the supports they need to promote their child's optimal development

EARLY CHILDHOOD STRATEGIC GOALS AND OBJECTIVES

GOAL 4: STATEWIDE COORDINATION

- *NH's young children and their families have the benefit of well-coordinated early childhood programs and services that work effectively together on their behalf.*
- **Objectives**
 - 4.1. Strengthen coordinated early childhood governance at all levels
 - 4.2. Establish an integrated, cross-agency statewide Early Childhood Data System to improve program effectiveness and child and family outcomes
 - 4.3. Support families and children as they transition between services and programs
 - 4.4. Strengthen public awareness of the importance of early childhood, and available resources, services, and programs



WHOLE FAMILY APPROACH TO JOBS: PARENTS WORKING, CHILDREN THRIVING

CHRIS TAPPAN AND CHRIS SANTANIELLO

GOALS AND APPROACH

- ▶ Support business and disrupt poverty by creating economic mobility pathways in every community
- ▶ Leverage an evidence-based, multi-generational, integrated framework with families at the center of policy making
- ▶ Incentivize work, boost individual effort and responsibility while strengthening communities
- ▶ Promote efficiencies in government and multi-sector partnerships



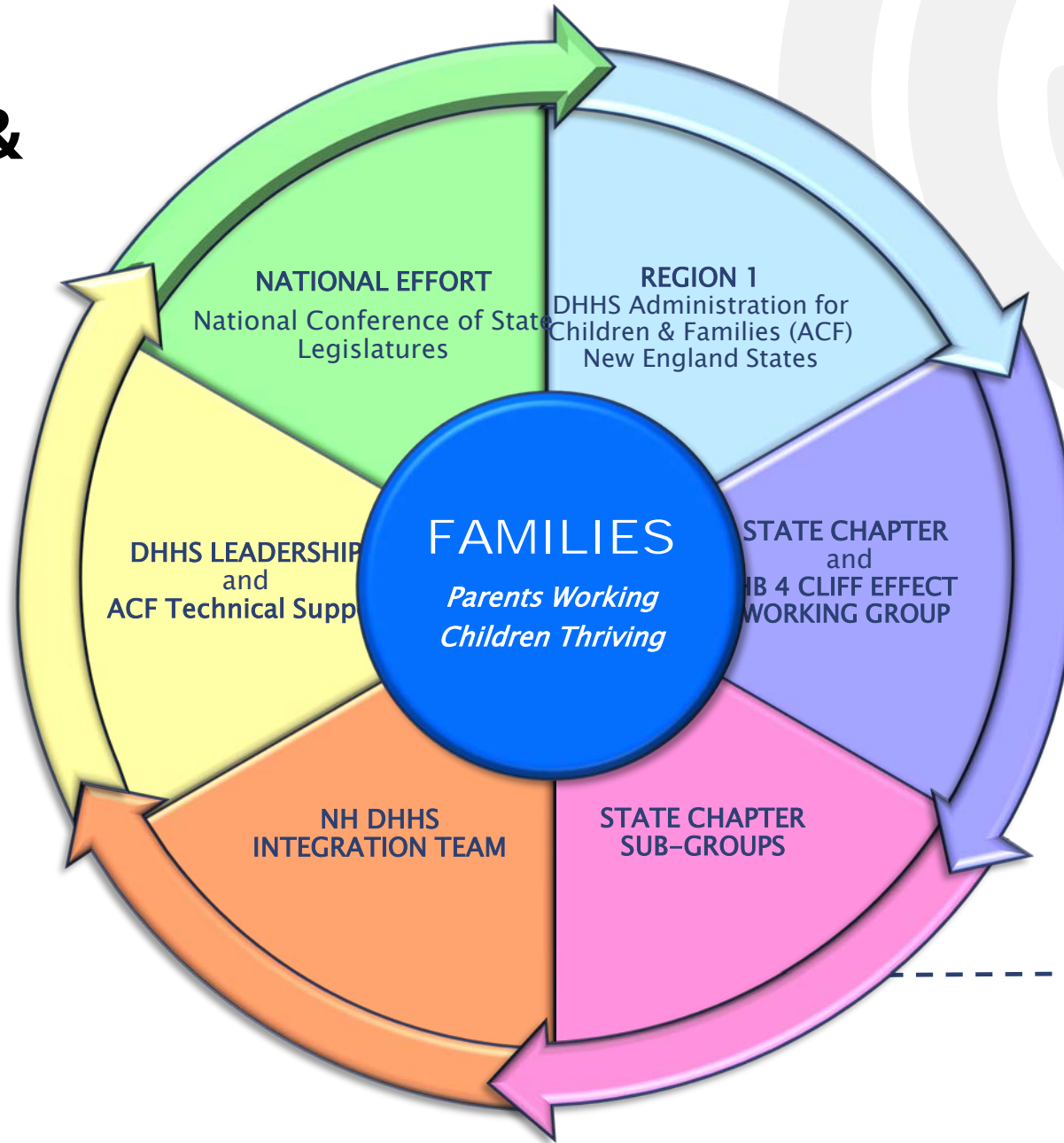
Participate in a regional and national learning community to accelerate innovation

FIVE COMPONENTS

- Whole Family Approach to Jobs NH Chapter
- DHHS's Whole Families Integration Team
- Benefits Cliff Effect Workgroup created by HB 4
- Economic Analysis of the cliff effect in New Hampshire
- Development of a benefits cliff calculator



GOVERNANCE & STRUCTURE



- Employers / Workforce
- Childcare
- Transportation
- Housing

“We envision an easily accessible, integrated system that feels seamless to families, meets them where they are at, strengthens parents capacity to work and supports the healthy development of their children and family”.

(NH WFATJ Chapter 2019)





NEW HAMPSHIRE
EMERGENCY CHILD
CARE
COLLABORATIVE

CHRISTINA LACHANCE AND CHRIS SANTANIELLO

NH EMERGENCY CHILD CARE COLLABORATIVE

- *In one week, DHHS launched and stood up an incentive program*, considering unknown length of Pandemic, geography and current enrollment data.
- As of June 15th, designated ECCPs have received over \$5.3M in incentive payments! Most centers used funds to support increased staffing costs.
- *All licensed child care centers*, regardless of emergency child care program designation, continued to receive payments from NH Child Care Scholarship Program. Programs were also able to bill DHHS for unlimited absentee days to encourage sick children or parents to stay home.

NH EMERGENCY CHILD CARE COLLABORATIVE

- DHHS suspended parent cost share during the crisis and continued eligibility for Child Care Scholarship. DHHS will continue the cost-share support at 50% for the months of July and August.
- New Futures is leading the Collaborative's ***Build it Back Better*** team to review federal guidance, develop cost models and make recommendations to support rebuilding and recovery efforts.

A Multi-Phase Approach to Child Care Program Recovery, Stabilization and Sustainability

Phase 1: Emergency
Response
(3/17/20 – 6/15/20)

Phase 2: Recovery &
Stabilization
(6/15/20 to 12/30/20)

Phase 3: Long-term
Stabilization,
Sustainability &
Capacity Building
(1/1/21 – TBD)

NH Child Care Recovery & Stabilization Program Purpose



To ensure:

- Healthy, safe and stable services for children and families;
- Child Care program recovery & stabilization
- Stronger child care system infrastructure based on the needs of families, business, providers, and local communities

NH Child Care Recovery & Stabilization Program

- For Programs: Provides Funding & Support for COVID-related Costs (operations, workforce, health & safety)
- Funding Amounts Based on Available Funding & Program Needs & Capacity
- Funds must be Expended by December 30, 2020
- Currently in the process of notifying programs of their awards

Emergency Child Care Program (ECCP) and Child Care Recovery and Stabilization Program (CCRSP)

Reporting as of Monday, June 15, 2020:

- 787 Designated as ECCP, of which 602 applied for CCRSP funding
- 578 programs are open and caring for children
- Additional 209 re-opening by September 8
- 12,000+ children being served in open programs
- 1,101 open child care spaces under COVID-19 guidelines, these are mostly early childhood spaces



WRAP UP AND NEXT STEPS
