

This snapshot summarizes narrative findings from learning sessions held with key regional stakeholders identified by the Public Health Networks and community agencies. Data sources are listed under corresponding infographic.

INVOLVE PEOPLE WITH LIVED EXPERIENCE IN PLANNING & EVALUATION

Most organizations involve people with lived experience, either through the direct participation in program planning and implementation or via feedback mechanisms such as advisory councils, focus groups, and surveys.

PROVIDING NON-STIGMATIZING SERVICES

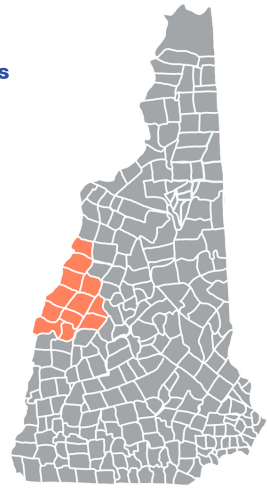
Several active organizations providing stigma trainings in the region but opportunities for more, especially for providers. Strong emphasis on person-first language, several organizations interested in development around cultural humility.

COLLABORATION ACROSS THE CONTINUUM OF CARE

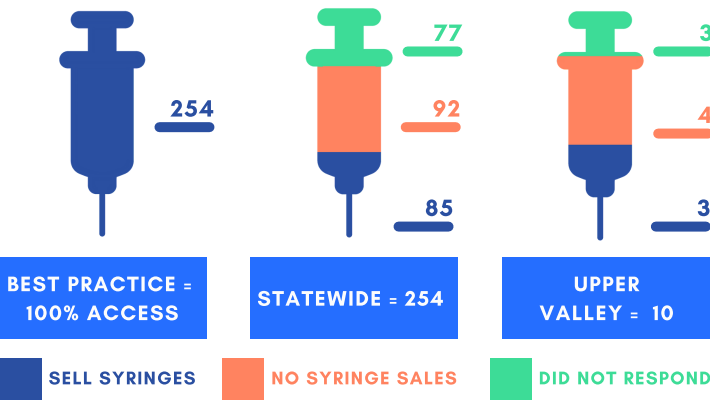
Collaboration is strong within the community, especially Dartmouth-Hitchcock (DH) and the Doorway, other agencies face challenges if not part of DH system. All agencies cited strong partnerships with external organizations.

INFECTION PREVENTION

HCV/HIV Resource Center (including Claremont Exchange and White River Junction Good Neighbor Clinic) & DH are primary resources for infection prevention. Local engagement around Hepatitis C eradication.



PHARMACY SYRINGE ACCESS



SOURCE: SURVEY OF ALL NH RETAIL PHARMACIES CONDUCTED BY UNH IN 2020 (N= 174; TOTAL NH RETAIL PHARMACIES = 254; RESPONSE RATE 68.5%)

SYRINGE SERVICES PROGRAM ACCESS

NO SYRINGE SERVICES PROGRAM IN REGION

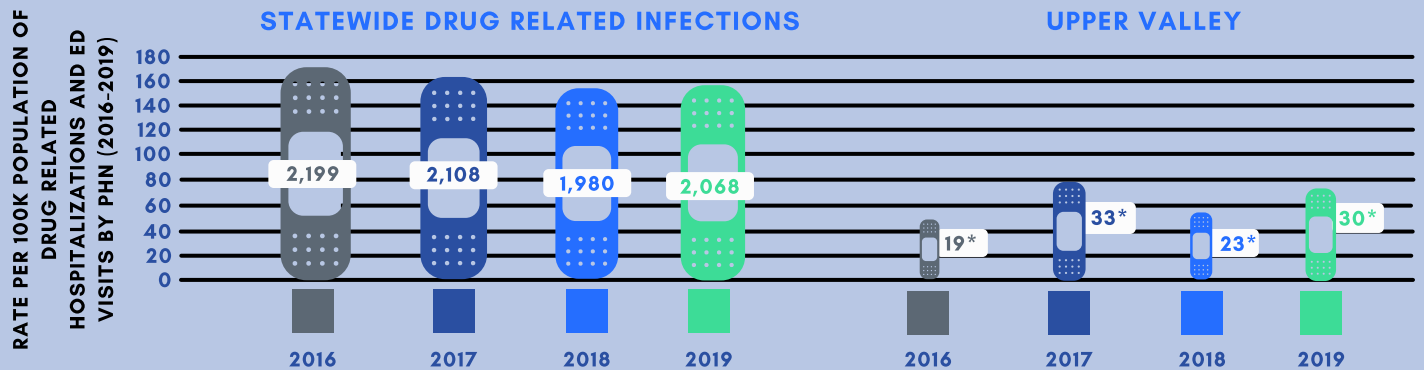
DISTANCES TO CLOSEST*

- 9.9 MI WHITE RIVER JUNCTION VT
- 20.8 MI CLAREMONT
- 36.7 MI SPRINGFIELD VT


*DISTANCES TO CLOSEST SYRINGE SERVICES PROGRAMS FROM PUBLIC HEALTH NETWORK IN LEBANON, NH

SOURCE: SYRINGE SERVICE PROGRAMS REGISTERED IN NH, VT, AND ME

HOSPITAL DISCHARGES WITH CONCURRENT INFECTION AND OPIOID USE^ STATEWIDE DRUG RELATED INFECTIONS UPPER VALLEY




*THE SIZE OF THE BANDAGE IS THE RATE PER HUNDRED THOUSAND, TO ALLOW FOR COMPARABILITY. THE NUMBER ON THE BANDAGE REPRESENTS THE ACTUAL NUMBER OF ED AND INPATIENT DISCHARGES WITH CONCURRENT INFECTION AND OPIOID USE CODES. SOURCE: OFFICE OF HEALTH STATISTICS AND DATA MANAGEMENT, BUREAU OF PUBLIC HEALTH STATISTICS AND INFORMATICS, NH DEPARTMENT OF HEALTH AND HUMAN SERVICES ^INCLUDED CASES OF CELLULITIS, ABSCESS, SKIN INFECTION, BACTEREMIA, SEPTIC ARTHRITIS, OSTEOMYELITIS, OR ENDOCARDITIS AND OPIOID USE, OPIOID ABUSE, OPIOID DEPENDENCE, OPIOID POISONING, OR ADVERSE EFFECT OF OPIOID



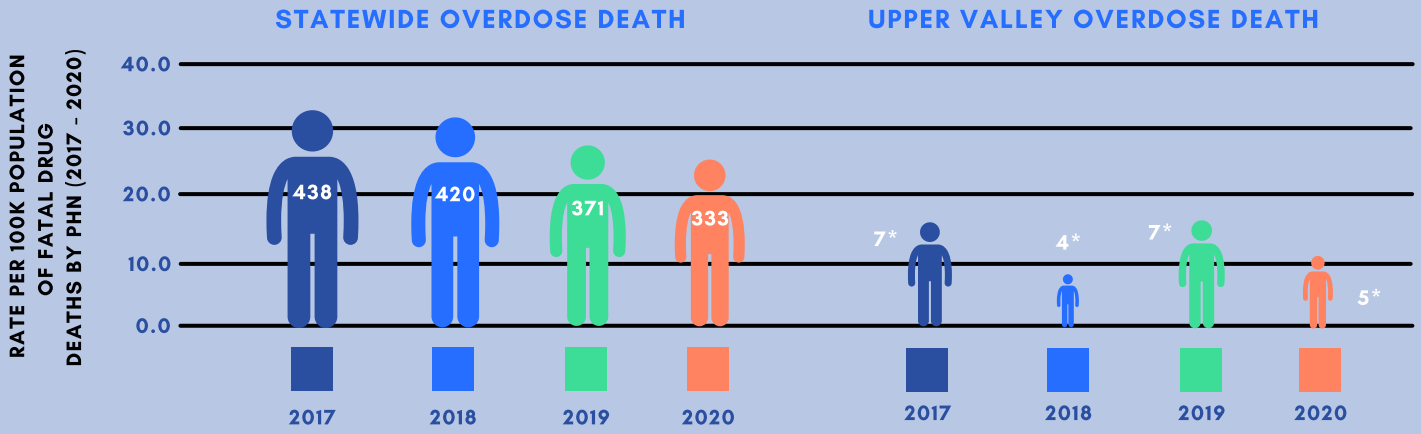
ACCESS TO NALOXONE

Naloxone is readily available in the community, several distribution sites. No reported targeted outreach to those at greatest risk.



REFERRAL TO SUD TREATMENT SERVICES

Recovery Community Specialist in DH ED. Close communication between the Doorway and treatment providers to access levels of care. No sober/transitional housing or Recovery Community Organization (RCO), refer out of the county. Center for Recovery Resources (RCO in Claremont).



*THE SIZE OF THE PERSON IS THE RATE PER HUNDRED THOUSAND, TO ALLOW FOR COMPARABILITY. THE NUMBER ON THE PERSON IS THE ACTUAL NUMBER OF OVERDOSE DEATHS. SOURCE: OFFICE OF THE NH MEDICAL EXAMINER (2017-2020)



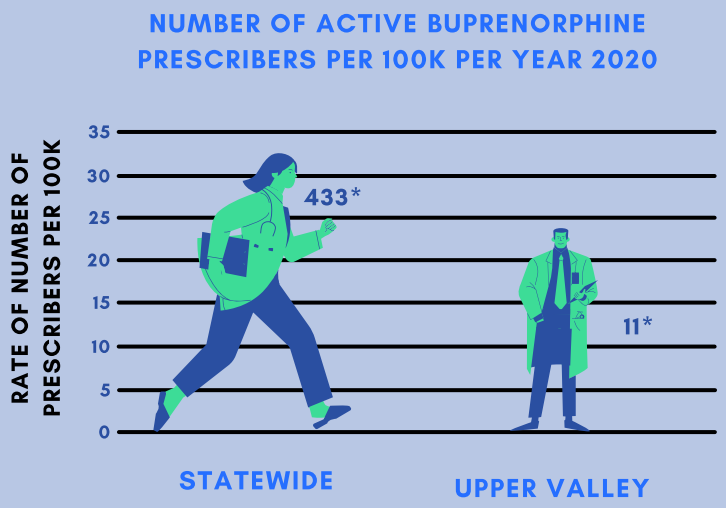
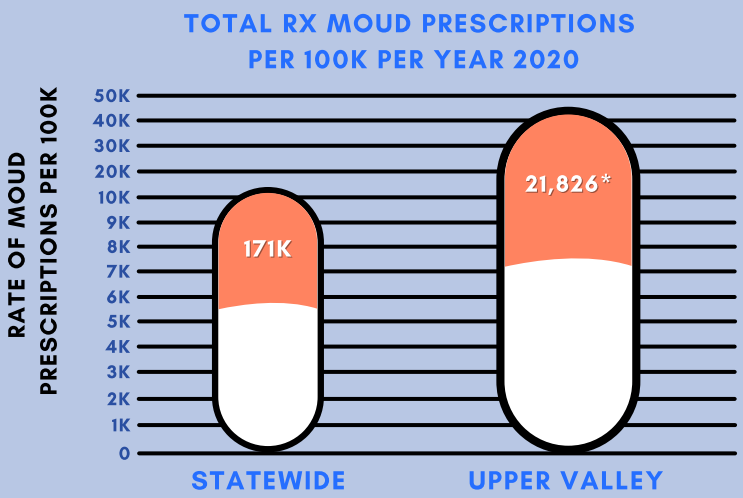
HOUSING

Many go the Haven shelter (White River Junction, VT) 20 adults, 8 families. Demand far outstrips supply, challenges with cross border coordination. No emergency housing or shelters. Motel/ hotel vouchers are available, tend to be unsafe places to stay. Some low-income housing projects in the works.



ACCESS TO MEDICATIONS FOR OPIOID USE DISORDER (MOUD*)

MOUD is readily available in the community through DH, Groups Recovery Together, West Central Behavioral Health, Habit OPCO Alice Peck Day, and Better Life Partners.



*THE SIZE OF THE ICON IS THE RATE PER HUNDRED THOUSAND, TO ALLOW FOR COMPARABILITY. THE NUMBER ON THE ICON IS THE ACTUAL NUMBER OF PRESCRIPTIONS OR PRESCRIBERS. SOURCE: THE NH PRESCRIPTION DRUG MONITORING PROGRAM (2020)



IMPACT OF COVID-19

Telehealth service expansion. Increased isolation and overdoses. Recovery community hit hard.