

This snapshot summarizes narrative findings from learning sessions held with key regional stakeholders identified by the Public Health Networks and community agencies. Data sources are listed under corresponding infographic.

INVOLVE PEOPLE WITH LIVED EXPERIENCE IN PLANNING & EVALUATION

Surveys conducted, often portal based or mailed which may not capture all people who use drugs. One organization deliberate about hiring successful program graduates in recovery as program staff. Persons with lived experience in leadership positions.

PROVIDING NON-STIGMATIZING SERVICES

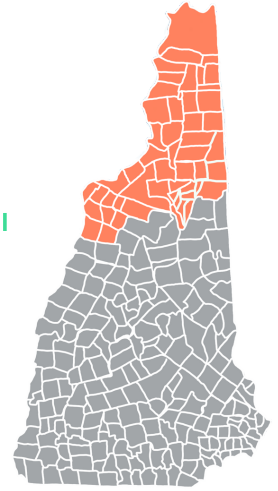
Person-centered treatment plans used. Clinical trainings for stigma, person-first language, and cultural humility have been conducted. All organizations recognize the opportunity for ongoing improvement.

COLLABORATION ACROSS THE CONTINUUM OF CARE

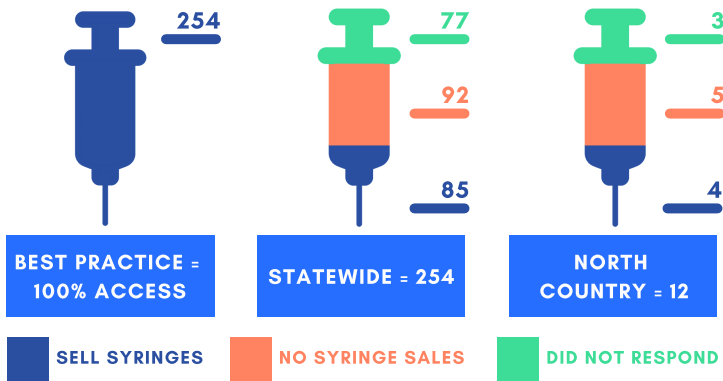
Strong partnerships, regular meetings convened by North Country Health Consortium, which include the local Doorways, Northern and Coos County Family Services, and the Family Resource Center.

INFECTION PREVENTION

No SSP in the North Country, the closest is in Vermont. Immunization referrals to community health practices. Safety while using drugs is discussed but education on drug-related infection prevention is limited.



PHARMACY SYRINGE ACCESS



SOURCE: SURVEY OF ALL NH RETAIL PHARMACIES CONDUCTED BY UNH IN 2020 (N= 174: TOTAL NH RETAIL PHARMACIES = 254; RESPONSE RATE 68.5%)

SYRINGE SERVICES PROGRAM ACCESS

NO SYRINGE SERVICES PROGRAM IN REGION

DISTANCES TO CLOSEST*

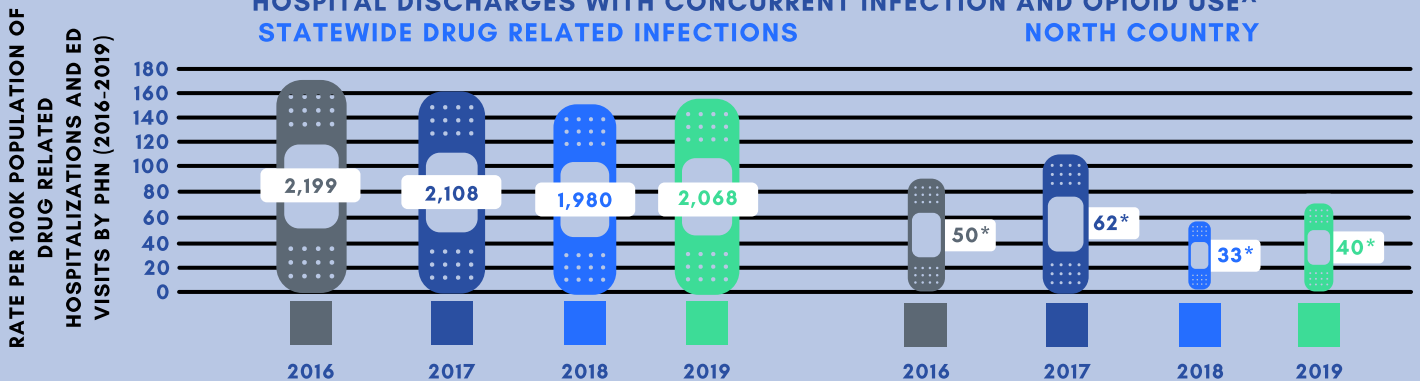
- 21.8 MI ST. JOHNSBURY, VT
- 51.6 MI CONWAY, NH
- 101.6 MI MANCHESTER, NH

WWW.NCHCNH.ORG/CONTACT.PHP

*DISTANCES TO CLOSEST SYRINGE SERVICES PROGRAMS FROM PUBLIC HEALTH NETWORK IN LITTLETON, NH

SOURCE: SYRINGE SERVICE PROGRAMS REGISTERED IN NH, VT, AND ME

HOSPITAL DISCHARGES WITH CONCURRENT INFECTION AND OPIOID USE^ STATEWIDE DRUG RELATED INFECTIONS NORTH COUNTRY



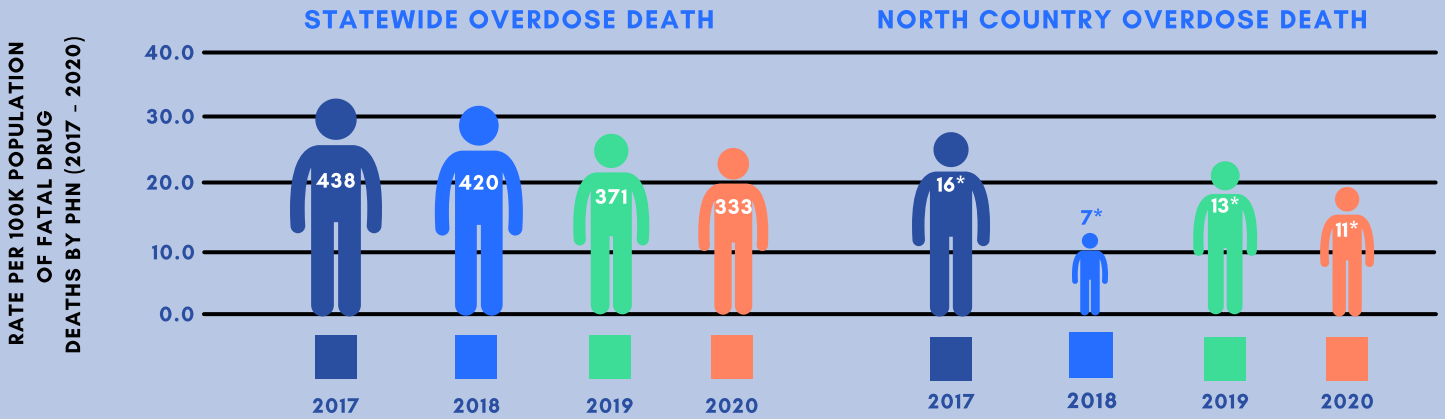
*THE SIZE OF THE BANDAGE IS THE RATE PER HUNDRED THOUSAND, TO ALLOW FOR COMPARABILITY. THE NUMBER ON THE BANDAGE REPRESENTS THE ACTUAL NUMBER OF ED AND INPATIENT DISCHARGES WITH CONCURRENT INFECTION AND OPIOID USE CODES. SOURCE: OFFICE OF HEALTH STATISTICS AND DATA MANAGEMENT, BUREAU OF PUBLIC HEALTH STATISTICS AND INFORMATICS, NH DEPARTMENT OF HEALTH AND HUMAN SERVICES ^INCLUDED CASES OF CELLULITIS, ABSCESS, SKIN INFECTION, BACTEREMIA, SEPTIC ARTHRITIS, OSTEOMYELITIS, OR ENDOCARDITIS AND OPIOID USE, OPIOID ABUSE, OPIOID DEPENDENCE, OPIOID POISONING, OR ADVERSE EFFECT OF OPIOID

ACCESS TO NALOXONE

Not directly provided by all organizations but available at Doorways, recovery community organizations, through drug court, pharmacies, and hospitals.

REFERRAL TO SUD TREATMENT SERVICES

Inadequate access to treatment and detox within the region, services are available within the region but overburdened, often clients must travel out of area for treatment. Alcohol detox is especially lacking. Recent loss of the Friendship House further exacerbates lack of access to Substance Use Disorder (SUD) treatment services.



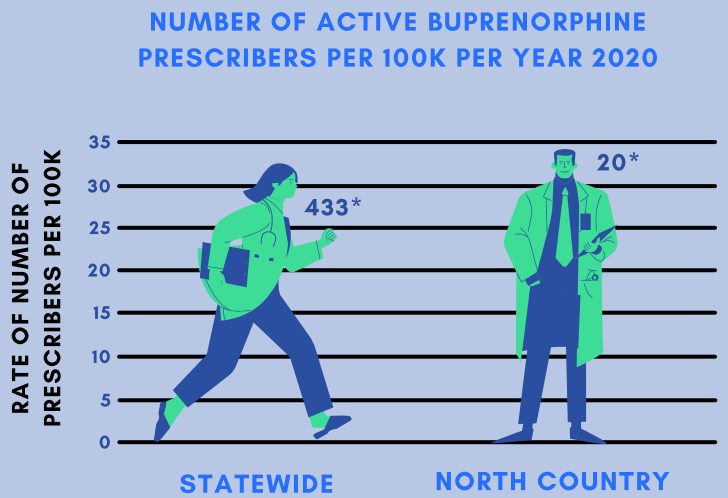
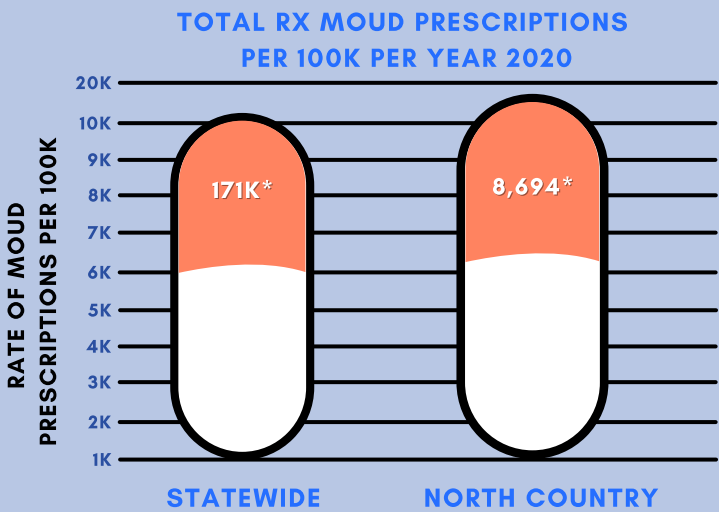
*THE SIZE OF THE PERSON IS THE RATE PER HUNDRED THOUSAND, TO ALLOW FOR COMPARABILITY. THE NUMBER ON THE PERSON IS THE ACTUAL NUMBER OF OVERDOSE DEATHS. SOURCE: OFFICE OF THE NH MEDICAL EXAMINER (2017-2020)

HOUSING

One shelter (Tyler Blain House) less accessible due to location in Lancaster. One sober living facility (White Mountain Recovery Homes) for the region. Low-barrier access to housing and transportation are needed. No short-term housing that is financially accessible.

ACCESS TO MEDICATIONS FOR OPIOID USE DISORDER (MOUD*)

The Doorways serve as the primary MOUD provider. Overall partners report adequate access but opportunities for Emergency Room (ER) induction and expansion of primary care prescribing exist.



*THE SIZE OF THE ICON IS THE RATE PER HUNDRED THOUSAND, TO ALLOW FOR COMPARABILITY. THE NUMBER ON THE ICON IS THE ACTUAL NUMBER OF PRESCRIPTIONS OR PRESCRIBERS. SOURCE: THE NH PRESCRIPTION DRUG MONITORING PROGRAM (2020)

IMPACT OF COVID-19

Increased use of telehealth but concern for lack of participant accountability. Concerns about increase in meth and alcohol use. The Friendship House closed permanently, and the shelter has decreased capacity.